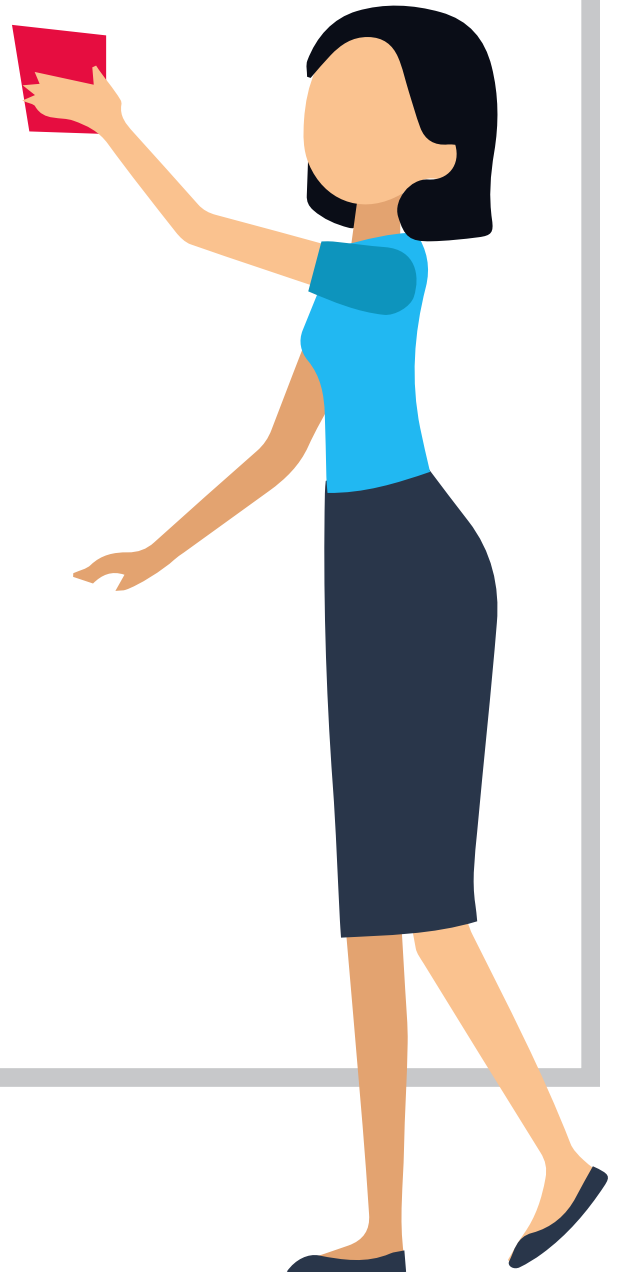


# Whiteboard Care & Cleaning Tips

1. If your new board has a label on the surface telling you to remove the protective film, follow the instructions on the label and remove the film at this time.
2. Use glass cleaner to remove any adhesive residue left on the board surface.
3. Do not allow dry erase marker ink to remain on the board for several days without erasing.
4. Clean your dry erase board weekly to prevent marker color build up. Use household glass cleaner with a clean, soft cloth to keep your board surface looking new.
5. Use a dry erase marker to color over areas that are hard to clean. Then erase. The solvent in the ink will frequently clean the soiled area.

## Alternative dry erase board cleaners:

- Soap and water
- Rubbing alcohol
- Multi-surface cleaners
- Ceramic stove top cleaners
- Non-abrasive household cleaners



MOORECO™

**MooreCo Inc.**  
2885 Lorraine Avenue | Temple, TX 76501  
p: 800.749.2258 | f: 866.888.7483  
[www.moorecoinc.com](http://www.moorecoinc.com)