

# REGENCY

MABP27BK • Kee Adjustable Leg Installation for I-Promise Tables

Needed for Assembly: 2 person(s), x1 Phillips Head Screw Driver/Drill

Optional for Assembly: x1 Tape Measure, Marking Tool (pencil, marker, etc.)

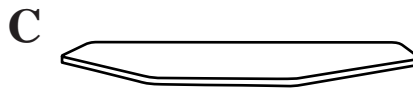
## Hardware :

**A:** Screws(21)



## Parts :

**B:** Adjustable Leg (3) • **C:** I-PROMISE Table Top • **D:** Allen Wrench



**STEP 1:** Place **Table Top(C)** on a clean flat surface with desired table finish face down. Position **Adjustable Legs(B)** as shown in **Figure A**. Then, attach Legs to Table Top using **7 Screws(A)** per Leg.

\*NOTE: Attach legs at least 1 inch away from the edge of the tabletop

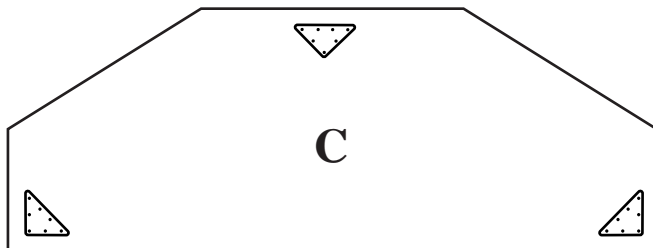


Figure A

## IMPORTANT NOTICE:

- Place all wooden parts on a clean and smooth surface such as a rug or carpet to avoid the parts from being scratched.
- Check to be sure that you have all parts and hardware.
- Remove all wrapping materials, including staples & packing straps before you start to assemble.
- Do not tighten all screws/bolts until completely assembled.
- Keep all hardware parts out of reach of children.

Any problems or questions call Regency Office Furniture at 1-866-816-9822 or email [customerservice@regencyof.com](mailto:customerservice@regencyof.com)

# REGENCY

MABP27BK • Kee Adjustable Leg Installation for I-Promise Tables

Needed for Assembly: 2 person(s), x1 Phillips Head Screw Driver/Drill

Optional for Assembly: x1 Tape Measure, Marking Tool (pencil, marker, etc.)

**STEP 2:** Using 2 people, flip the table over and adjust leveling glides accordingly.

**STEP 3 (Adjusting Leg Height):** Insert **Allen Wrench(D)** into adjustment bolt and turn counter-clockwise to loosen bolt (see Figure D.) Adjust leg to desired height, and then turn bolt clockwise until snug to secure the leg height (see Figure E.) Repeat step for each leg.



**Figure D**



**Figure E**

**Note:** Adjustment bolt will not fully tighten until it is lined up with one of the pre-drilled notches.