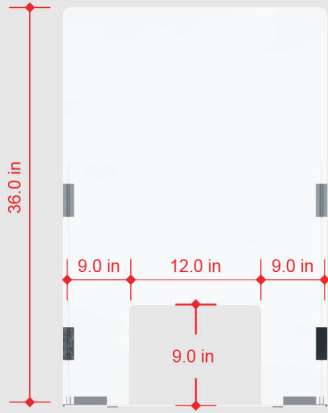


Counter Sneeze Guard Set-Up & Installation Instruction

IMPORTANT!

Check package for all parts.
For missing or damaged parts please
contact Customer service using
the contact information at the bottom
of this page.



Note: Please familiarize yourself with the
right image of correctly assembled
guard.



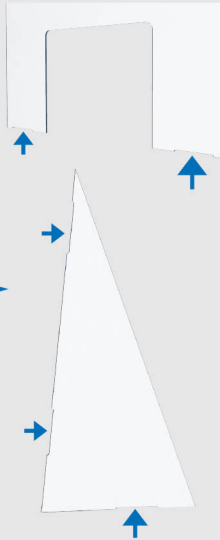
STEP 1



Remove front & back film from:
a.) Front Shield
b.) Side Supports
c.) Base

Note the notches on the Front Shield
& Side Supports. These are pre-set
locations for the grippers to be
attached.

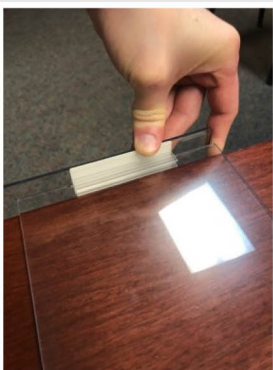
There are 8 notches.
2 on the Front Shield
3 on each Side Support



STEP 2

Firmly press grippers onto the Front
Shield & Side Supports in the notch
locations shown.

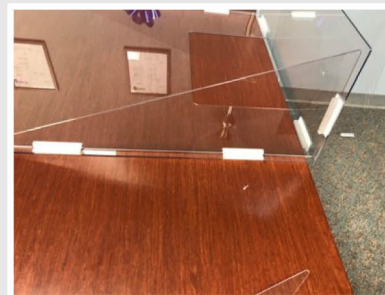
IMPORTANT! IF USING BASE BEGIN STEP 3. IF NOT PROCEED TO STEP 4



Base plate mounting,
Use provided DS tape
to mount to counter
top or planned
surface.

STEP 3

Lay the Front Shield on a flat surface with grippers hanging
over edge as shown. Aline Base edge with the edge of the
gripper and tape using gripper adhesive pad.



STEP 4

If using without Base, use the gripper
adhesive tape to mount directly to
counter top or planned surface.

Without Base plate
Discard provided DS tape
& follow step 5 above.

