



# Idea Island Assembly Instructions



## KIDS

Our Customers. Our  
Inspiration.  
We should all try to be  
more like them

## Components

### What's in the Box!



- **LEGS (4)**
- **HEAVY DUTY 5" CASTERS (4)**
- **ELECTRIC COVER (1)**
- **CONNECTOR ANGLE (2)**
- **LEG COVER (4)**
- **RATCHET FASTENER: NYLON BLACK (28)**
- **Serrated NUT 1/4 20" (8)**
- **FLAT WASHERS (28)**
- **HEX CAP BOLT 1/4 20" X 3/4" (28)**



Heavy Duty 5" Casters



Electric Cover



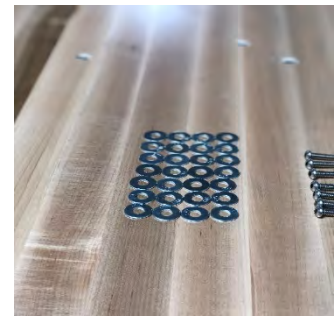
Connector Angle



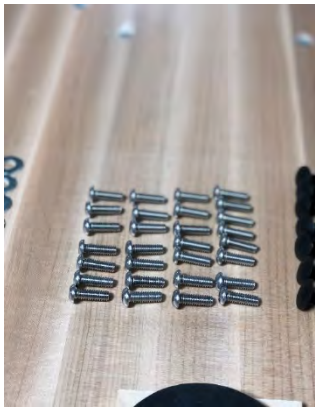
Legs



Leg Cover



Flat Washers



Hex Cap Bolt  $\frac{1}{4}$  20 x  $\frac{3}{4}$



Ratchet Fastener: Nylon Black



Serrated Nut  $\frac{1}{4}$  20

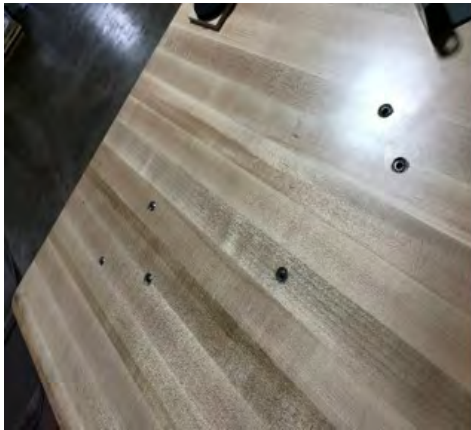
## Tools

### What you will need!

- **Standard Allen Wrench 5/32<sup>nd</sup>**
- **Standard 3/4" Wrench**



# Lets Get Started!



1)

REMOVE SOLID MAPLE BUTCHER BLOCK FROM BOX AND PLACE IT DOWN ON A SMOOTH SURFACE. INSERTS SHOULD BE EXPOSED AS SHOWN



2)

TIME AND ALIGN THE INSERTS IN EACH CORNER AS



PAIR ON WASHER 3) BOLT AND ONE FLAT WASHER INTO EACH HOLE ON THE LEG

TO AVOID ADDITIONAL MOVEMENT AND TO ASSIST IN THE ALIGNMENT PROCESS, **DO NOT TIGHTEN BOLTS COMPLETELY UNTIL BOTH LEGS ARE SET IN PLACE**



**4)**

**AFTER INSERTING THE BOLTS IN EACH DESIGNATED HOLE, THE LEGS SHOULD BE ALIGNED AS SHOWN IN THE IMAGE TO THE LEFT**

**\*YOU ARE NOW READY TO TIGHTEN THE BOLTS SECURELY USING THE RECOMMENDED 5/32<sup>ND</sup> ALLEN WRENCH**



**5)**

**ALIGN THE CONNECTOR ANGLE TO THE HOLES IN THE LEGS AS SHOWN TO LEFT AND INSERT HEX CAP BOLTS WITH WASHERS AND TIGHTEN**



**6)**



**7)**

USING THE LEG COVER AND RATCHET FASTNERS, PLACE THE LEG COVER OVER LEG AND ALIGN WITH PRE-DRILLED HOLES. PLACE ONE RATCHET FASTNER PER HOLE AND SIMPLY SNAP IN PLACE

**\*REPEAT THIS STEP ACCORDINGLY**



**8)**

TAKE ONE OF THE HEAVY DUTY 5" CASTERS AND INSERT IT ON THE TOP OF YOUR LEG INTO DESIGNATED HOLE.

TAKE THE RECOMMENDED  $\frac{3}{4}$ " WRENCH AND TIGHTEN DOWN THE SPECIFIED BOLT TO THE LEFT UNTIL IT CANNOT GO DOWN ANY FURTHER

ADDITIONALLY, CONNECT THE PROVIDED  $\frac{1}{4}$ " 20 SERRATED NUTS TO THE BACK OF THE BOLT AND TIGHTEN SECURELY AS SHOWN

**\*REPEAT STEPS 4-6 FOR REMAINING TABLE LEGS**





**9)**

**THE ELECTRICAL UNIT WILL ALREADY BE CONNECTED TO YOUR BUTCHER BLOCK TABLE AS SHOWN**

**UNWRAP THE CORD AND EXTEND THE CORD LONG WAYS DOWN THE CHANNEL**

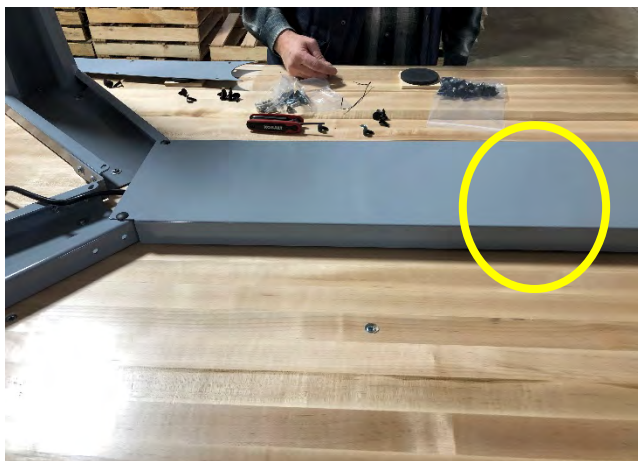


**10)**

**PLACE THE ELECTRICAL COVER OVER THE CHANNEL**

**LINE HOLES UP WITH THE COORDINATING HOLES ON THE LEGS AS SHOWN**

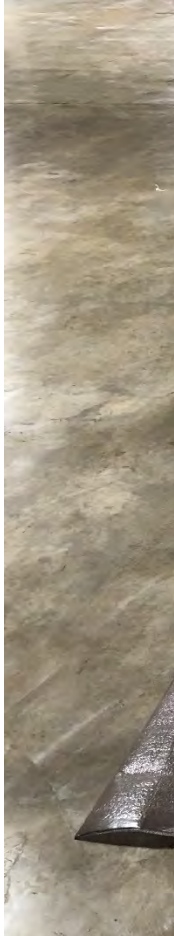
**PLACE THE RATCHET FASTENERS IN THE HOLES AND SNAP THEM IN PLACE**



**NOTICE HOW ELECTRICAL CORD IS FULLY EXTENDED THROUGH THE CABLE MANAGEMENT TRAY AND OUT THE END.**

**ADDITIONALLY, YOU MAY ALSO RUN THE ELECTRICAL CORD THROUGH THE LEG CABLE MANAGEMENT FOR FLOOR POWER**





**YOUR TABLE IS NOW COMPLETE! ABOVE IS A PICTURE OF THE IDEA ISLAND FULLY ASSEMBLED**

**MAKE SURE YOUR CASTERS ARE LOCKED AND SECURED BEFORE FLIPPING THE TABLE OVER. THIS WILL PREVENT ANY ADDITIONAL MOVEMENT**

**USE CAUTION AND WITH ASSISTANCE FLIP TABLE BACK OVER AND YOU ARE READY TO USE YOUR NEW PRODUCT!**