

Shapes

Configurable Desk & Table System



MOORECO™



Unique top shape allows multiple configuration options.

22"
to
32"

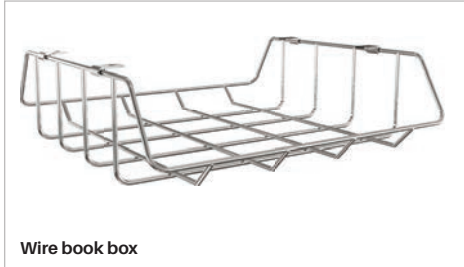




Tote tray (medium and large tables only)



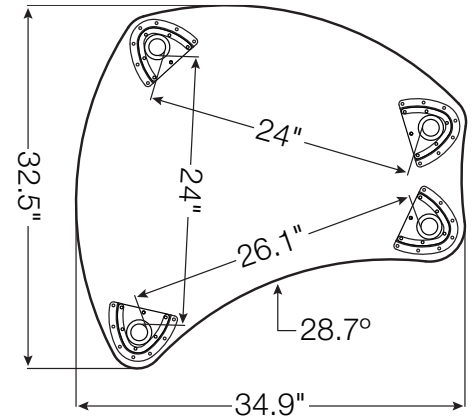
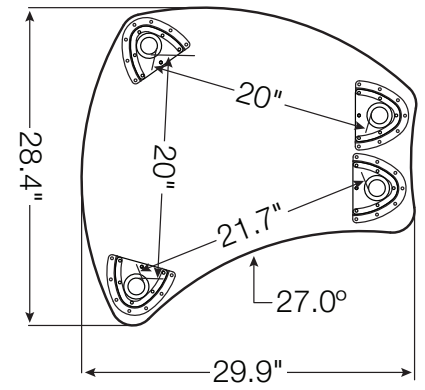
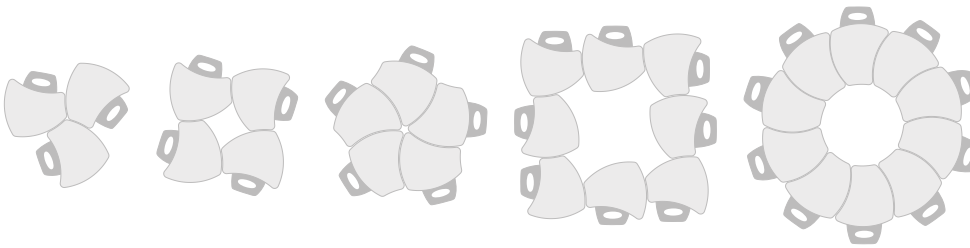
Caster



Wire book box



Pack hook



Shapes Desk & Table

- Shapes Desk brings simplicity and functionality in a customizable package made to fit any classroom or study setting. Offering quick and easy assembly, numerous group configurations, height adjustability, and custom laminates.
- Join the Shapes Desk together in a number of ways to fit your needs. The highly versatile table's ergonomic shape provides flexibility and workspace comfort. Allows easy left or right hand seating.
- Available in two sizes for space saving ergonomics. Adjustable from 22" to 32"H in 1" increments.
- Scratch resistant 1.25" thick HPL top with t-mold edge banding. Available in custom colors.
- Powder coated steel legs are height adjustable, and designed for quick assembly. Available in black or silver. Legs include floor safe glides, or choose optional casters for easy pod configuration.
- Optional accessories include casters, book box, tote tray, pack hook, and ganging device.
- Optional Clamp Mount Outlet & USB Charger provides instant desktop power and charging.
- Has achieved GREENGUARD Gold Certification. TAA compliant. Twelve year limited warranty. Patented design.

Laminate Color Options:



7909 - Fusion Maple



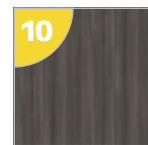
7919 - Amber Cherry



4622 - Gray Nebula



7949 - Asian Night



7998 - Low Line



8201 - Gray Elm

Part No.	Item	Product Dimensions	Ship Wt.
Shapes Desk & Table			
11X35X-XXXX*	Shapes Desk (Larger)	22" - 32"H x 34.9"W x 32.5"D	54 lbs
11X36X-XXXX*	Shapes Desk (Smaller)	22" - 32"H x 29.9"W x 28.4"D	42 lbs
Optional Accessories			
66654*	Student Desk Casters (Set of 2)	1.5" diameter	3 lbs
66661*	Wire Book Box (Black)	4"H x 15"W x 13.5"D	5 lbs
66662*	Wire Book Box (Chrome)	4"H x 15"W x 13.5"D	5 lbs
83530*	Tote Tray (Black - Set of 2)	3.75"H x 13"W x 17"D	18 lbs
66667*	Pack Hook	Holds up to 50 lbs	2 lbs
66640*	Ganging Device for Training Tables (Set of 2)	1.63"H x 4.5"W x .25"D	3 lbs
66675*	Clamp Mount Outlet & USB Charger	5.25"H x 7.25"W x 3"D	3 lbs

*Ships UPS. Shipping weights are listed on a per item basis and may vary based on quantities ordered. Custom products are non-returnable and non-refundable.



MooreCo | Vanerum North America
 2885 Lorraine Avenue | Temple, TX 76501
 p: 800.749.2258 | f: 866.888.7483
www.moorecoinc.com | www.vanerumna.com

