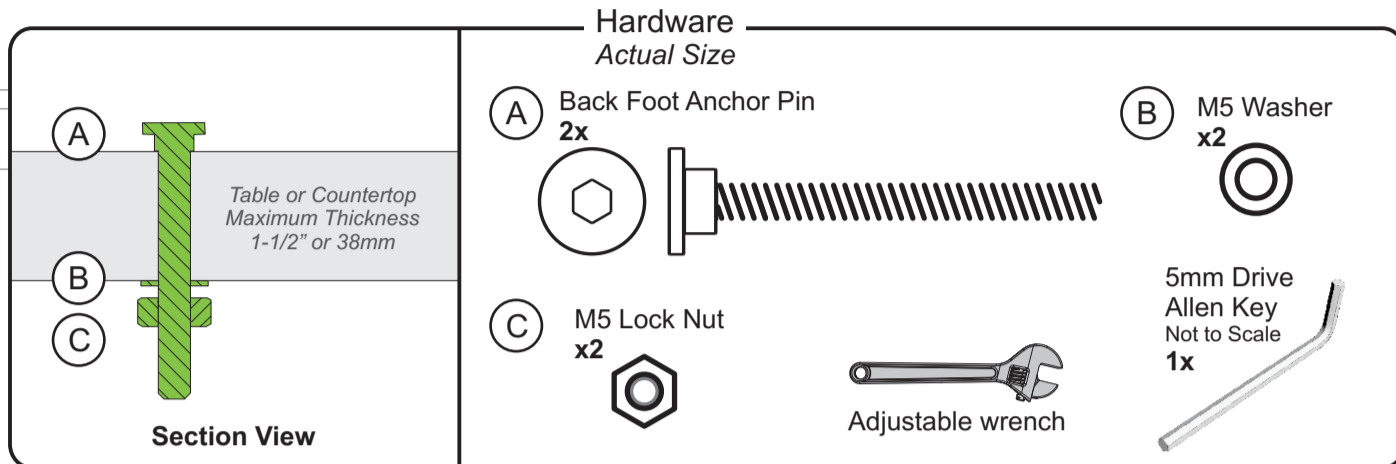
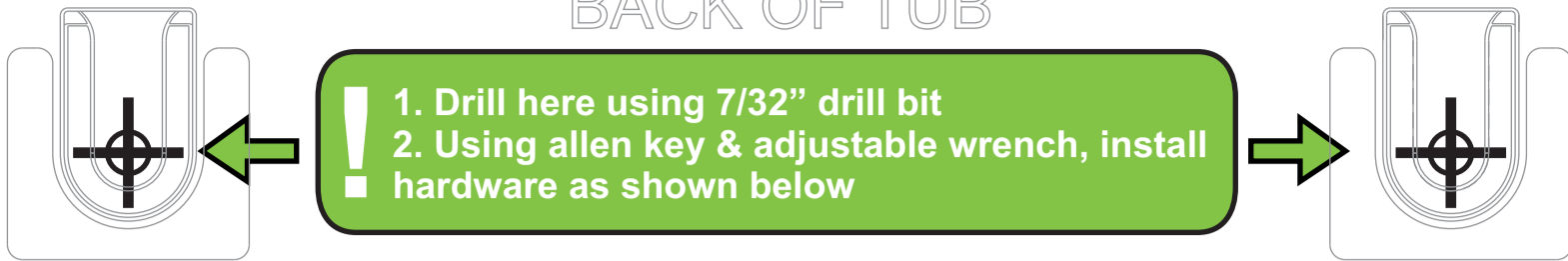


Tech Tub²® Locking System Template

REMOVE TEMPLATE FROM AI BEFORE INSTALLATION PROCESS

BACK OF TUB



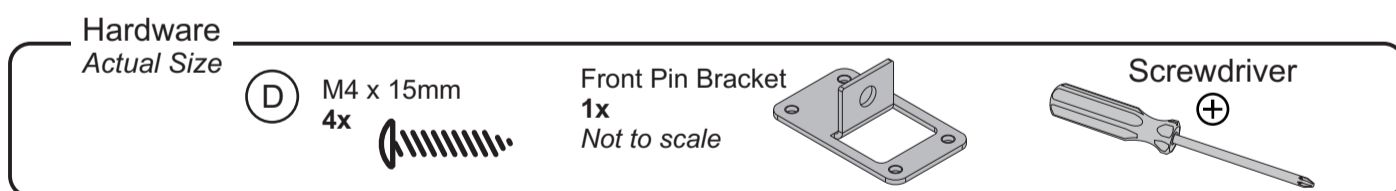
★ READ THIS FIRST ★

Additional tools required:

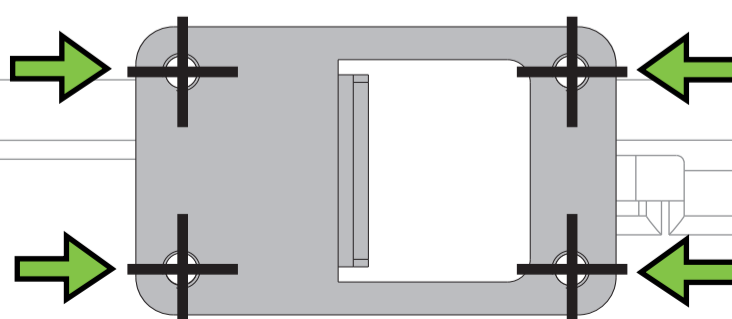


Before beginning, you should:

1. Squarely align template on surface
2. Tape template in place before drilling
3. After ALL holes have been drilled, remove template and install hardware as directed



1. Drill here using 1/8" drill bit
2. Place Front Pin Bracket seen below
3. Using a screwdriver, install M4 x 15mm screws



FRONT OF TUB

REMOVE TEMPLATE FROM AI BEFORE INSTALLATION PROCESS

REMOVE TEMPLATE FROM AI BEFORE INSTALLATION PROCESS