

Disassembly Instructions

Intellect Wave 4 Leg Chair, Intellect Wave Cantilever Chair

Material Type: A . Steel B. Plastic

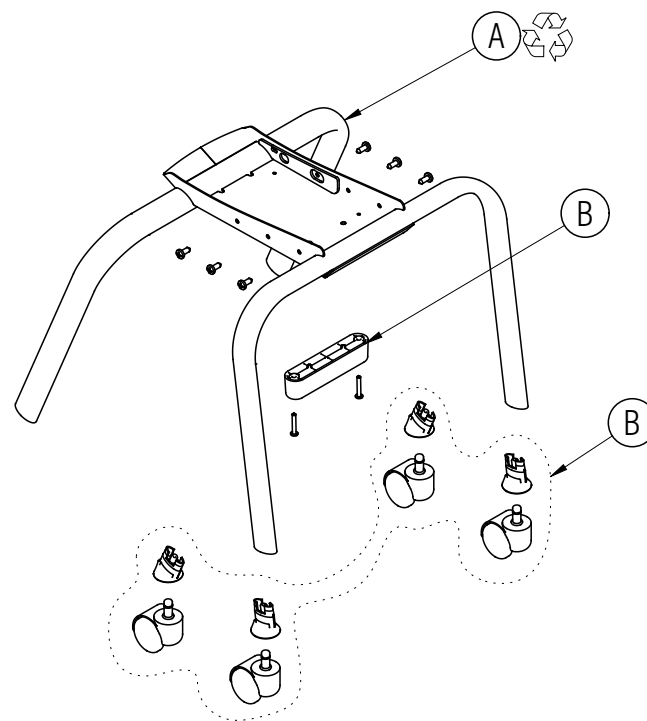
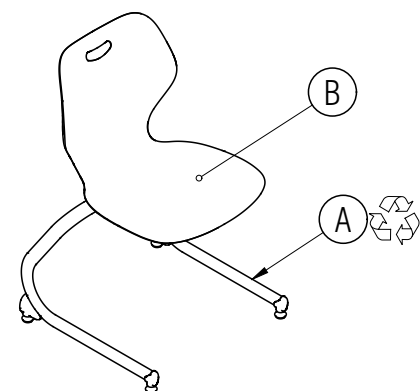
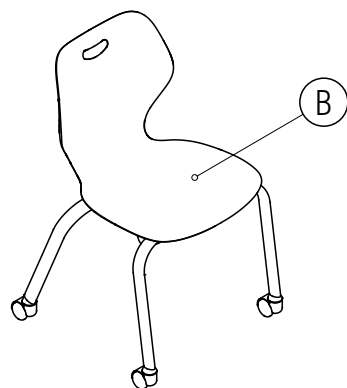


Procedure:

1. Remove the screws holding the seat to the chair frame and remove the seat.
2. Remove the screws holding the stacking bumper to the chair frame and remove the stacking bumper.
3. Pry the out the casters and bushings from the ends of the leg tubes.

General Notes:

1. Disassembly time: 5-10 minutes
2. This procedure assumes basic familiarity with hand tools and furniture terminology: no specialized training is required
3. All materials removed and disassembled shall be sorted and segregated with like materials and disposed of or recycled according to recycling availability or waste acceptance
4. For items to be recycled, refer to KI's End of Life Recycling Matrix and KI's End of Life Recovery Options Matrix, available at www.ki.com



All fasteners not explicitly tagged are Material Type A: Steel

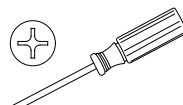
Required Tools



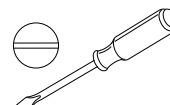
Gloves



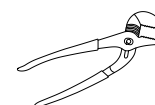
Safety Glasses



Philips Screwdriver



Flat Screwdriver



Channel Lock Pliers



Pry Bar