

430/439 APTITUDE STUDENT DESK

usacapitol
PREMIUM QUALITY CLASSROOM FURNITURE

Simplicity. Style is 50% utility and 50% finish. The best of both worlds is exemplified in this utilitarian dream. Function and form never had a better example than this attractive student desk.



H I G H L I G H T S

- Premium Quality
- Welded U-brace
- 18 Gauge Legs
- Welded Under Structure
- Lifetime Frame Warranty
- Adjustable or Fixed Height
- Nine Hard Plastic Top Colors
- Open Occupant Access

Aptitude™ 430/439 Student Desk Specifications

Frame: All-tubular design, 1" diameter, 18-gauge front leg running from side to side is multiple arc welded to an integral 1", 18-gauge U-shaped top support and rear leg. 5/8", 18 gauge tubular U-brace is inserted into punched holes in the rear legs and welded to all four legs. Minimum 4-1/2" of total weld. Frame is chrome plated after all welding is complete.

Standard Chrome Finish: Chrome is comprised of metal layers (Nickel & Chromium) electrostatically bonded to metal. Our standard is 4-6 mills (25%-50% more than our competitors) of Nickel. Hard-Chrome will not scratch. CASS test per ASTM B 368 - 22 hours harsh tested before rust. Our product is chromed on plateable quality tubing after all welding is completed.

Inserts: 86" diameter, nickel/chrome plated tubing with punched holes to receive adjusting screws. Leg adjustment uses self-tapping locking screws which pass completely through both upper leg and lower insert.

Glide System: Glide attachment will be a standard internal gripping spring steel umbrella at least 5/8" diameter or larger. The glide will have a ferrule. Glide casing and ferrule shall be constructed of durable case hardened steel; no plastic. The glide will be of full swivel design, silent and firm fitting for positive attachment and retention. All glides must make full level contact with the floor and the maximum swivel angle of the glide shall not be violated. Incorporating our exclusive glide button sys-

tem available in either nylon, neoprene, steel, or wool felt bottom. Pick the right base for the floor surface. Snap on a new base for surface change or wear replacement.



Top: Solid molded thermoset plastic. 18" x 24" x 5/8" with smooth molded edges and permanent color throughout thickness. Pencil groove. Top is attached using self-tapping screws into seven uniformly drilled holes.

Top Colors: Available in standard Sand and Slate. Optional Grey Nebula, Charcoal, Maple, Oak, Cherry, Walnut, and Mahogany.

Warranty:

- Limited lifetime frame warranty
- Ten Year Comprehensive

Samples: Compliance with the specifications and verification of required quality levels may be determined by requesting samples.

Models:

- 439•29-1/2" Fixed Height.
- 430•23-1/2"-29-1/2" Adjustable at 1" Increments.

D E S K F E A T U R E S

- Safe, bracketless continuous all-tubular frame
- Heavy-Duty inserted U-brace support
- Plateable-quality heavy-gauge steel
- 5/8" warp-free top with pencil groove
- High-quality chrome inserts
- Long-ferrule inside holding nylon glides
- Superior extra-long frame welds
- Locking-screw insert attachment
- Available in colors to complement stock chair colors

O P T I O N S

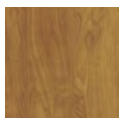
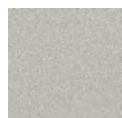
- Adjustable or fixed height models
- Patented Glide System



Standard Frame
Color: CHROME



Standard Hard Plastic Top
Colors: Sand and Slate



Optional Hard Plastic Top Colors:
Grey Nebula, Charcoal, Maple, Oak, Cherry, Walnut, and Mahogany.

