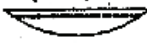


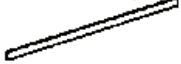





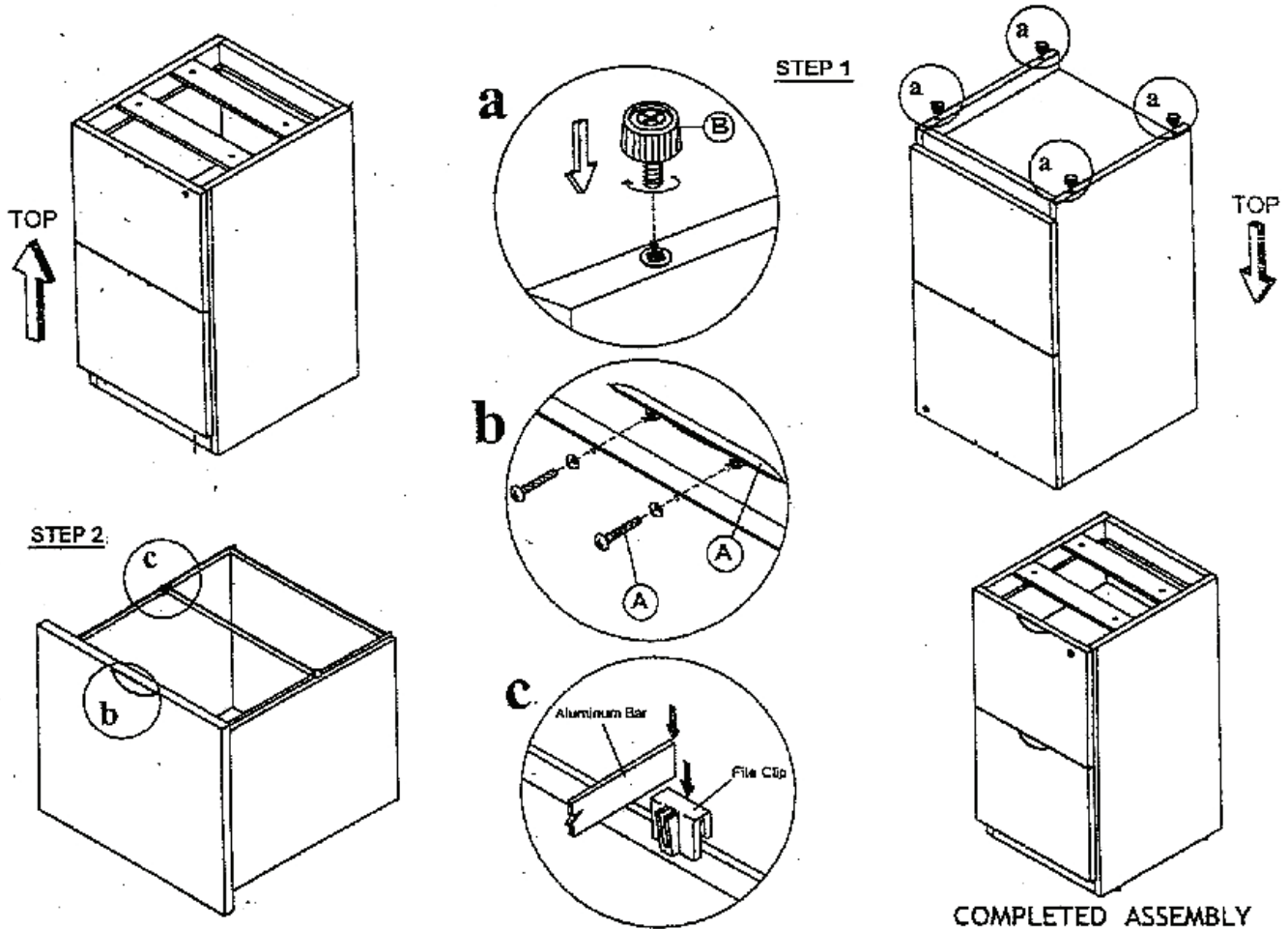


REGENCY

YOUR COMPLETE OFFICE SOLUTION

LPFF22 (LFF22P), VPFF22 (VFF22P) - INSTRUCTIONS

<p>A</p>  <p>32mm Metal Scallop Shape Handle 2 Sets</p>	<p>B</p>  <p>Adjustable Glide 4 Pcs</p>	<p>C</p>  <p>File Clip 4 Pcs</p>	<p>D</p>  <p>302 x 16 x 3mm Aluminum Bar 2 Pcs</p>	
<p>E</p>  <p>JCBC Screw M6 x 40mm c/w 1/2 Washer 4 Sets</p>	<p>F</p>  <p>7 Hole L-Bracket 2 Pcs</p>	<p>G</p>  <p>Screw #8 x 5/8" 12 Pcs</p>	<p>H</p>  <p>#8 x 1 1/2" Pan Head Screw 2 Pcs</p>	<p>I</p>  <p>Keys 1 Set</p>



IMPORTANT NOTICE:

- Place all wooden parts on a clean and smooth surface such as a rug or carpet to avoid the parts from being scratched.
- Check to be sure that you have all parts and hardware.
- Remove all wrapping materials, including staples & packing straps before you start to assemble.
- Do not tighten all screws/bolts until completely assembled.
- Keep all hardware parts out of reach of children.

Any problems or questions call Regency Office Furniture at 1-866-816-9822