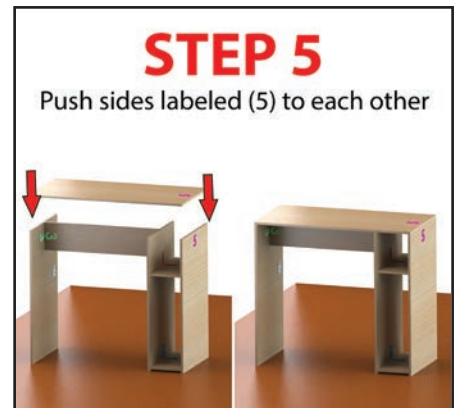
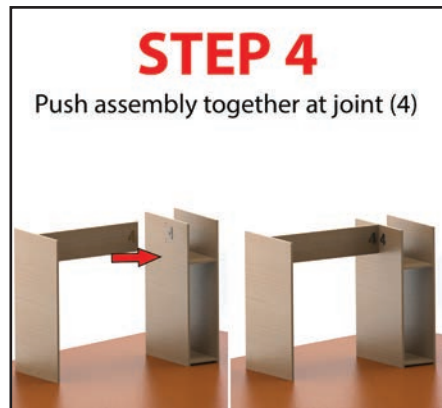
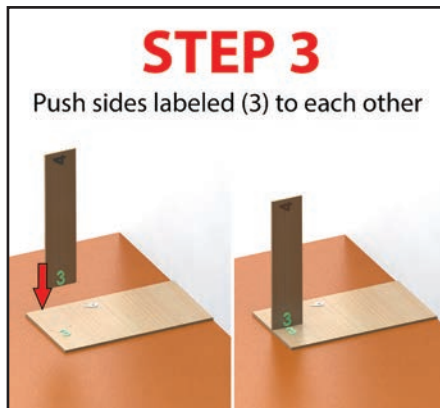
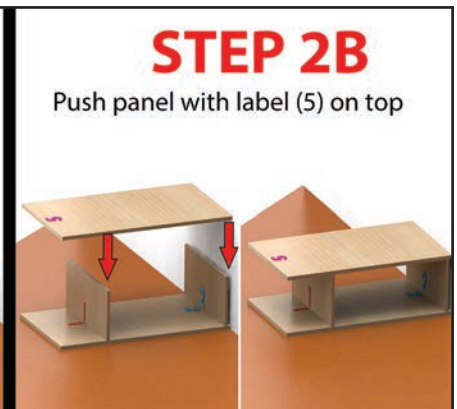
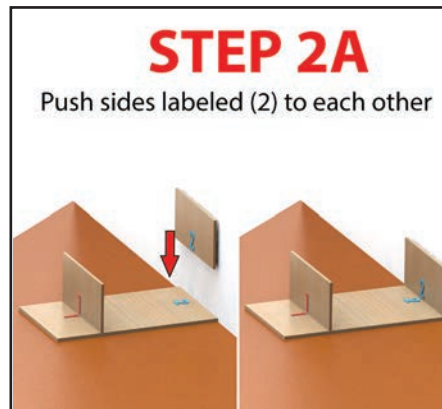
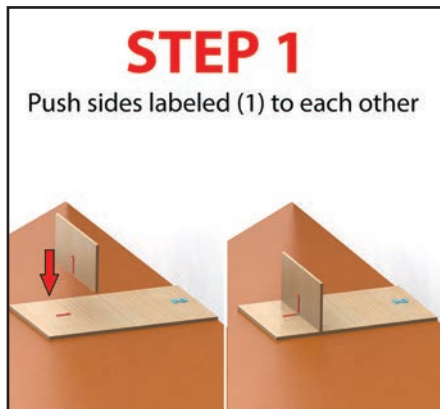


## 31" Desk • PDS3116 • INSTRUCTIONS

Organize your parts and hardware. You may need a rubber mallet.



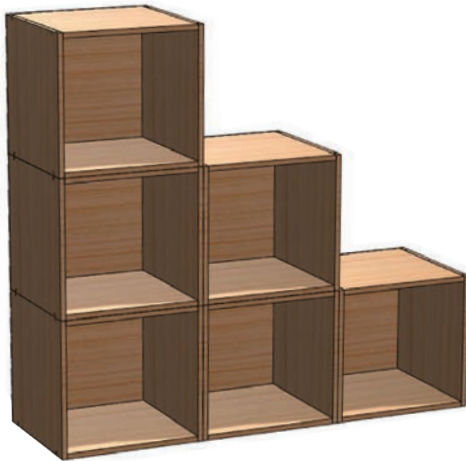
**MUST FOLLOW STEPS IN ORDER  
OR  
FURNITURE MAY BE DAMAGED**



### IMPORTANT NOTICE:

Place all wooden parts on a clean and smooth surface such as a rug or carpet to avoid the parts from being scratched.  
Check to be sure that you have all parts.  
Remove all wrapping materials, including staples & packing straps before you start to assemble.  
Keep all hardware parts out of reach of children.

**CHECK OUT THESE OTHER GREAT ITEMS :**



**PC1211**

12" Cube for Cubo Storage Systems



**PBC1629**

3 Shelf Deskside Bookcase