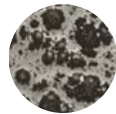


Black Speckle Receptacles



**Black
Speckle
Finish**



This collection of distinctively designed receptacles is constructed with the highest quality, puncture-resistant, fire-safe steel. The special durable Black Speckle finish will not show fingerprints or smudges. Recommended for indoor use only. Features a rolled rim and double lock seams for durable long life. Ash 'N Trash, Open Top Dome and Push Top Dome include a galvanized inner liner. Open Top Dome has 6" open top, Push Top Dome has spring-loaded self-closing door. The large Open Top receptacle has a 8½" top opening for easy disposal of waste and a large capacity that is ideal for high traffic areas.

Model	Description	Capacity	H x Dia.	Ship Weight	Price Each
9675NC	Push Top Dome Receptacle	15 gal.	35 x 16½"	22 lbs.	268.00
9676NC	Open Top Dome Receptacle	15 gal.	34 x 16½"	22 lbs.	242.00
9677NC	Open Top Receptacle	35 gal.	28½ x 19"	23 lbs.	340.00

Discount Code B

