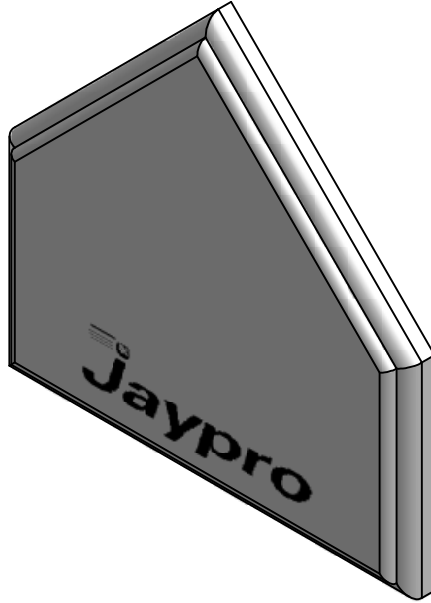
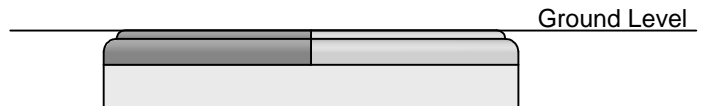


HP-150

Bury-All Home Plate



- High durability, wood filled construction.
- No corners or edges to catch spikes
- Non-skid rubber surface
- Waterproof



CAUTION

Installer should make sure top of home plate is level with playing surface.

REV.	DESCRIPTION	DATE	BY			DRAWING NAME / PART NUMBER: HP-150			
				<div style="display: flex; justify-content: space-around; align-items: center;"> <div style="text-align: center;"> <h2 style="margin: 0;"><u>HP-150</u></h2> <h3 style="margin: 0;">Bury-All Home Plate</h3> </div> <div style="text-align: center;"> </div> </div> <p style="font-size: small; margin-top: 5px;"> FAX: 800.444.1779 (SALES) 860.440.0628 (ENG.) </p> <p style="font-size: small; margin-top: 5px;"> PHONE: 800.243.0533 (TOLL FREE) 860.447.3001 (LOCAL) </p> <p style="font-size: x-small; margin-top: 5px;"> JAYPRO SPORTS, LLC, 976 HARTFORD TURNPIKE, WATERFORD, CT 06385 USA </p>		CHK'D BY: BTS			
						DRAWN BY: DC		ISSUE DATE: 6/12/2006	
						SHEET: 1 OF 1		REV. A	
COPYRIGHT 2006 JAYPRO SPORTS, LLC. ALL RIGHTS RESERVED						THIS PRINT IS THE PROPERTY OF JAYPRO SPORTS, LLC. AND MAY NOT BE REPRODUCED WITHOUT WRITTEN PERMISSION			