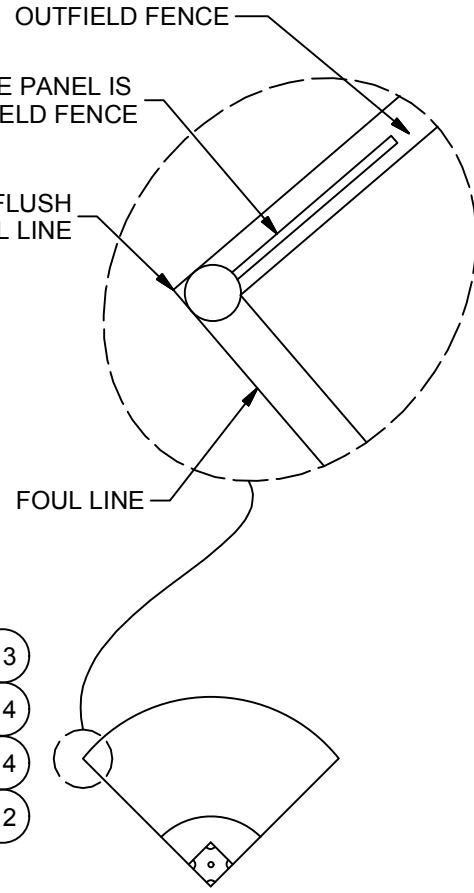
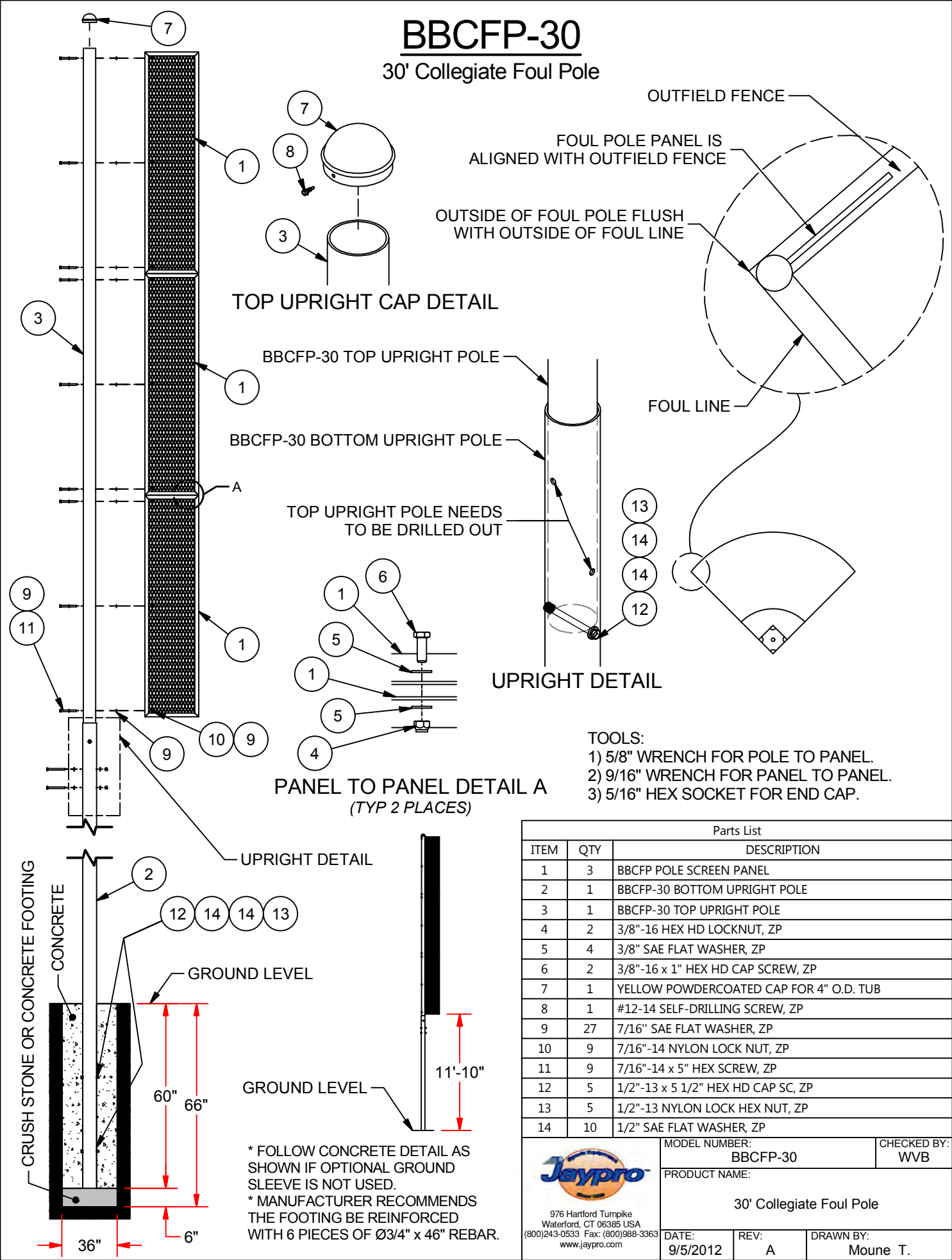


BBCFP-30

30' Collegiate Foul Pole



- TOOLS:**
- 1) 5/8" WRENCH FOR POLE TO PANEL.
 - 2) 9/16" WRENCH FOR PANEL TO PANEL.
 - 3) 5/16" HEX SOCKET FOR END CAP.

Parts List		
ITEM	QTY	DESCRIPTION
1	3	BBCFP POLE SCREEN PANEL
2	1	BBCFP-30 BOTTOM UPRIGHT POLE
3	1	BBCFP-30 TOP UPRIGHT POLE
4	2	3/8"-16 HEX HD LOCKNUT, ZP
5	4	3/8" SAE FLAT WASHER, ZP
6	2	3/8"-16 x 1" HEX HD CAP SCREW, ZP
7	1	YELLOW POWDERCOATED CAP FOR 4" O.D. TUB
8	1	#12-14 SELF-DRILLING SCREW, ZP
9	27	7/16" SAE FLAT WASHER, ZP
10	9	7/16"-14 NYLON LOCK NUT, ZP
11	9	7/16"-14 x 5" HEX SCREW, ZP
12	5	1/2"-13 x 5 1/2" HEX HD CAP SC, ZP
13	5	1/2"-13 NYLON LOCK HEX NUT, ZP
14	10	1/2" SAE FLAT WASHER, ZP

	MODEL NUMBER: BBCFP-30	CHECKED BY: WVB
	PRODUCT NAME: 30' Collegiate Foul Pole	
976 Hartford Turnpike Waterford, CT 06385 USA (800)243-0533 Fax: (800)988-3363 www.jaypro.com	DATE: 9/5/2012	REV: A
		DRAWN BY: Moune T.