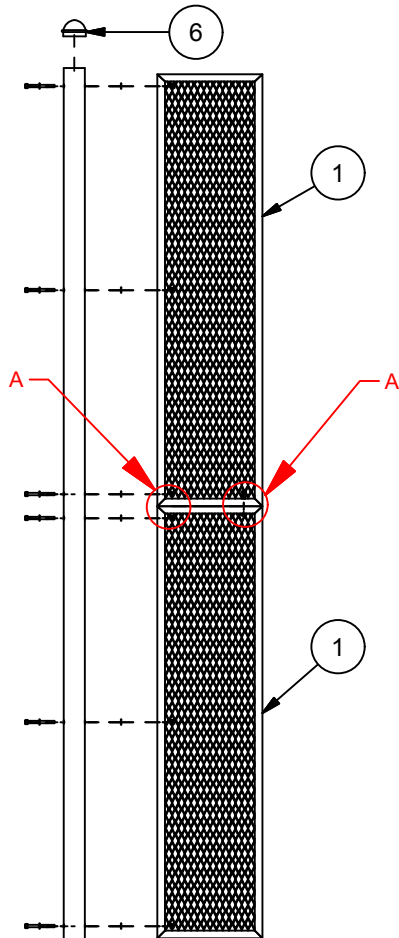


BBCFP-20

20' Collegiate Foul Pole

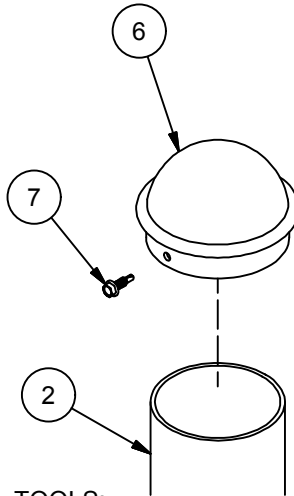


OUTFIELD FENCE

FOUL POLE PANEL IS ALIGNED WITH OUTFIELD FENCE

OUTSIDE OF FOUL POLE FLUSH WITH OUTSIDE OF FOUL LINE

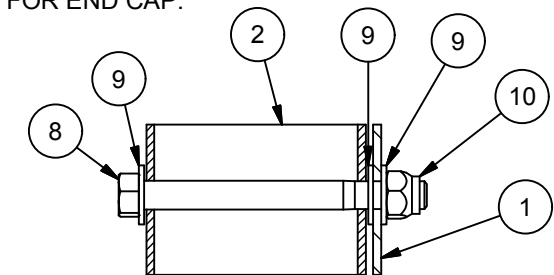
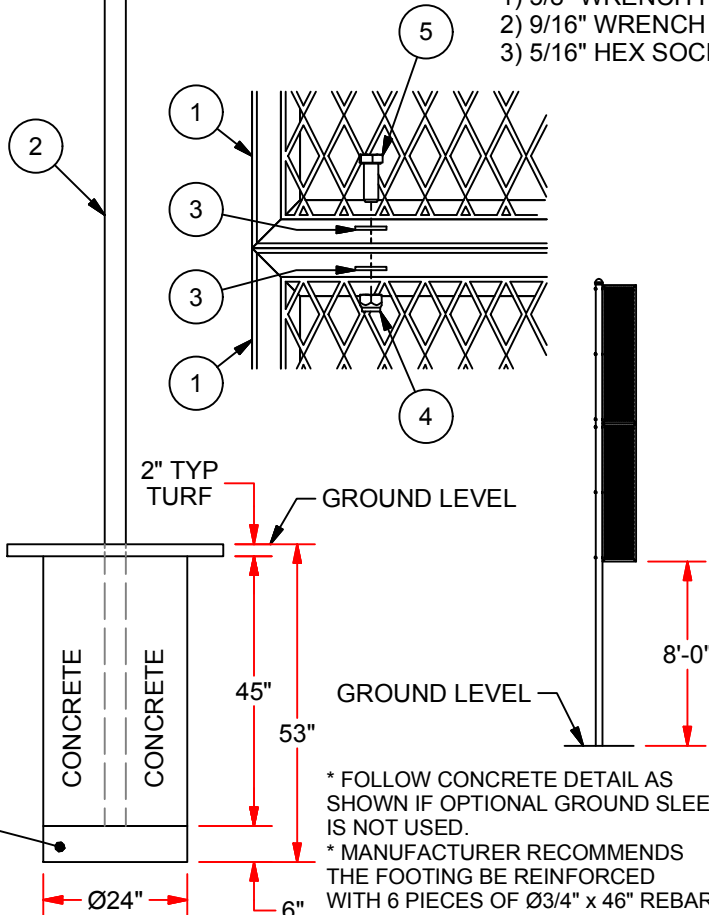
FOUL LINE



TOOLS:

- 1) 5/8" WRENCH FOR POLE TO PANEL.
- 2) 9/16" WRENCH FOR PANEL TO PANEL.
- 3) 5/16" HEX SOCKET FOR END CAP.

CRUSH STONE OR CONCRETE FOOTING



WING PANEL TO POLE UPRIGHT

Parts List

ITEM	QTY	DESCRIPTION
1	2	BBCFP POLE SCREEN PANEL
2	1	BBCFP-20 SINGLE POLE UPRIGHT
3	4	3/8" SAE FLAT WASHER, ZP
4	2	3/8"-16 HEX HD LOCKNUT, ZP
5	2	3/8"-16 x 1" HEX HD CAP SCREW, ZP
6	1	YELLOW POWDERCOATED CAP FOR 3.5 O.D. TUB
7	1	#12-14 SELF-DRILLING SCREW, ZP
8	6	Hex Bolt - 7/16"-14 x 4-1/2"
9	18	7/16" SAE FLAT WASHER, ZP
10	6	7/16"-14 NYLON LOCK NUT, ZP

* FOLLOW CONCRETE DETAIL AS SHOWN IF OPTIONAL GROUND SLEEVE IS NOT USED.
 * MANUFACTURER RECOMMENDS THE FOOTING BE REINFORCED WITH 6 PIECES OF Ø3/4" x 46" REBAR.



976 Hartford Turnpike
 Waterford, CT 06385 USA
 (800)243-0533 Fax: (800)988-3363
 www.jaypro.com

MODEL NUMBER: BBCFP-20	CHECKED BY: WVB		
PRODUCT NAME: 20' Collegiate Foul Pole			
DATE: 12/4/2013	REV: B	DRAWN BY: Moune T.	SHEET: 1 OF 1