

SGP-600 NOVA PREMIERE™



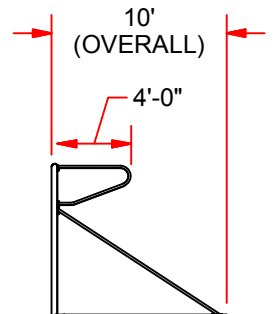
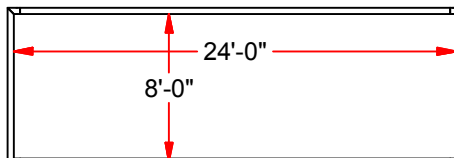
NOVA PREMIERE™ FEATURES:

- OFFICIAL SIZE: 8' HIGH x 24' WIDE
- GOAL FACE IS 4" O.D. ROUND W/ 2" x 4" FULL BASE
- ALL ALUMINUM EXTRUDED GOAL
- ENTIRE GOAL POWDER COATED WHITE
- ALL STAINLESS STEEL HARDWARE
- EUROPEAN BACKSTAY PLUS AUXILIARY BACKSTAY
- BACKSTAYS 1.7" ROUND HEAVY WALLED ALUMINUM TUBE
- EASY TRACK™ NET ATTACHMENT SYSTEM, WITH EXCLUSIVE FLUSH NET CLIPS
- MEETS ALL SAFETY REQUIREMENTS OF ASTM F2056 AND ASTM F2673.
- MEETS NFSHSA, NCAA & FIFA SPECIFICATIONS
- OPTIONAL WHEEL KIT (NSGWK)
- OPTIONAL ANCHORS:

- IN-GROUND ANCHOR (SGA-60)
- SAND BAGS (SWB-451W / SWB-451)
- WEIGHT ANCHOR (SGA-40)



OPTIONAL WHEEL KIT



SGP-600 NOVA PREMIERE™

THIS PRINT IS THE PROPERTY OF JAYPRO SPORTS, LLC.
AND MAY NOT BE REPRODUCED WITHOUT WRITTEN PERMISSION



PHONE:
800.243.0533 (TOLL FREE)
860.447.3001 (LOCAL)

FAX:
860.444.1779 (SALES)
860.440.0628 (ENG.)

DRAWING NAME / PART NUMBER:

SGP-600

DRAWN BY: Moune T.	ISSUE DATE: 2/8/2011
CHKD BY: WVB	CHK DATE: 6/3/2013
SHEET: 1 OF 1	