



## ASSEMBLY INSTRUCTIONS

# EMDC-2436C&M MOBILE STORAGE ASSEMBLY INSTRUCTIONS



**\*Model views may not represent exact model purchased**

## TABLE OF CONTENTS

ASSEMBLY COMPONENTS ..... 3  
CASTER ASSEMBLY ..... 4  
PULL ASSEMBLY ..... 5

ASSEMBLY COMPONENTS

ITEMS INCLUDED	PART #		PART #
ASSEMBLY INSTRUCTIONS		1-HARDWARE BOX	

4-CASTERS, 4" SWIVEL PLATE	100081	1-SHELF,ADJ,MPL,EB1,1.00	200355-3318
		4-SHELF CLIPS,PLASTIC,5mm PIN	100027

REV	DESCRIPTION	DATE	INITIAL
---	Original Created	5-22-09	NAM

**Assembly Instructions for  
EMDC-2436C&M MOBILE STORAGE**

Items not included but needed for assembly:

1. ½" Wrench

2. Adjustable pliers

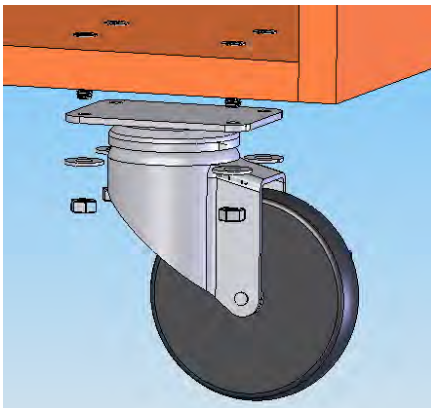
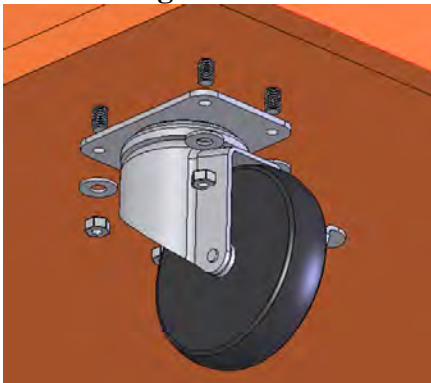
**Instructions:**

1. Attach the (4) 100081 4" Swivel Top Plate, W/Brake Casters into place using the (16) 100488 Screw,  $\frac{1}{4}$ " - 20X1  $\frac{1}{4}$ " slotted flat, (16) 218589 Washer,  $\frac{1}{4}$ " Flat, Zinc Plated & the (16) 100483 Nut,  $\frac{1}{4}$ " - 20 Hex Zinc into the bottom of the base as shown.

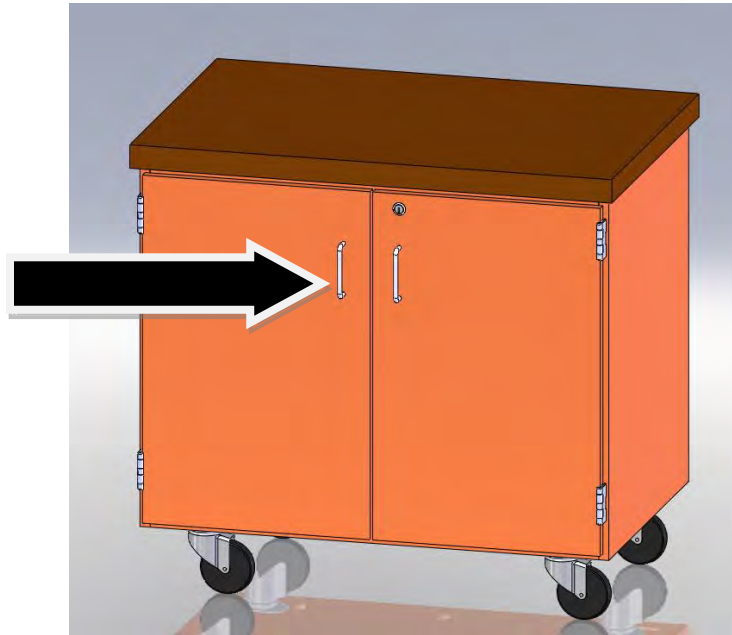
**Figure 1**



**Figure 1A Detail**



2. Reverse Pulls to Exterior of unit as shown.



3. Clean top with water only.