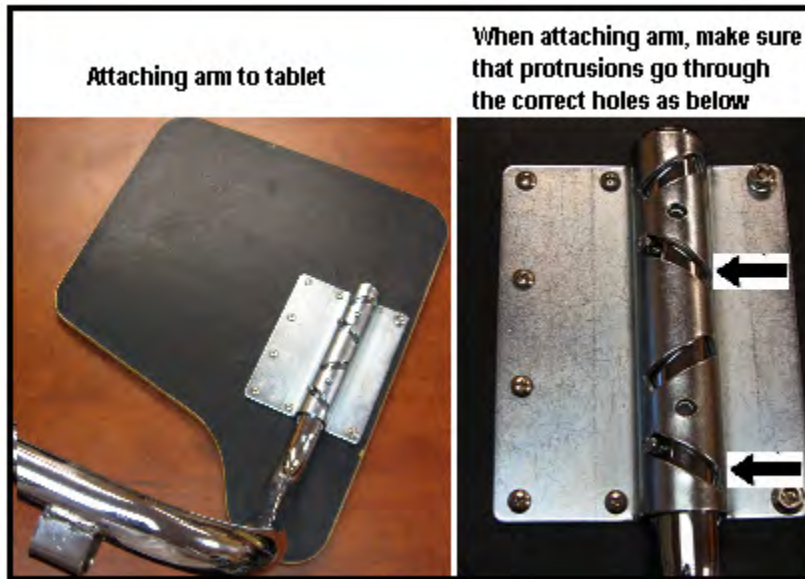


TA82 Instructions

Before assembling, make sure to identify all parts and hardware. The following tools will be necessary for assembly: Ratchet, 7/16" & _" socket, pliers, and a Philip screwdriver.

Attaching tablet to arm

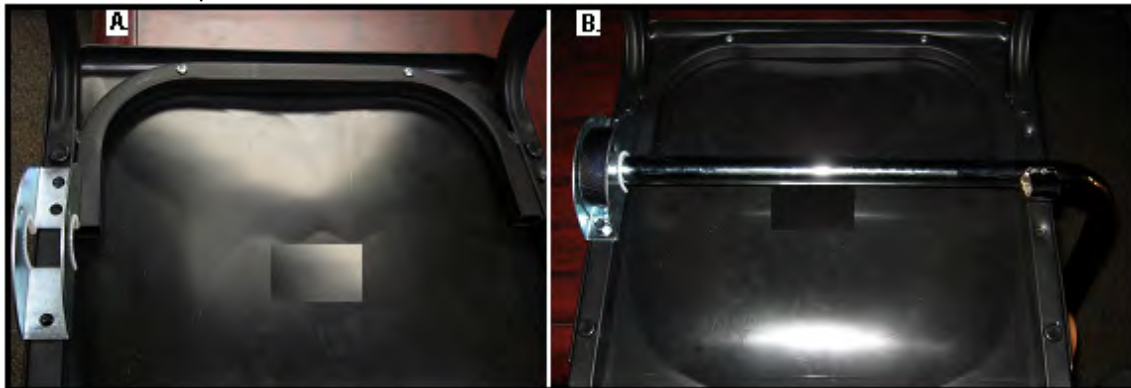
1. Place the tablet on a flat surface and insert the two flat-head screws through the tablet from front to back.
2. Place the arm on the tablet as in the below picture, and place the large metal bracket on top of the arm making sure that the two protrusions on the arm fit into the angled holes.



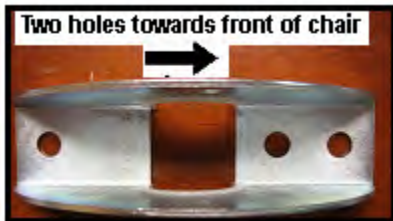
3. Tighten bolts with nuts using a 7/16" socket. Screw in the six screws with a Philip screwdriver.

Attaching tablet arm to chair

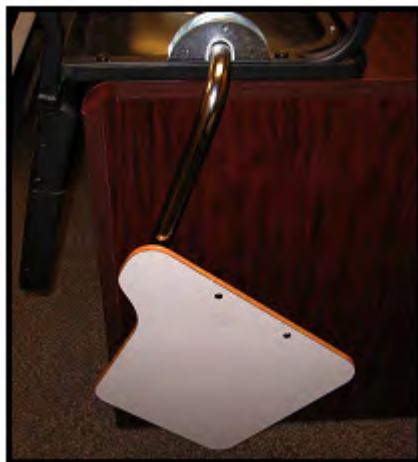
1. Place the chair upside down on a table before beginning assembly.
2. Place rectangular plastic pieces on each side of the frame directly on top of two holes of the frame.
3. Beginning at the left side of the chair, attach bracket and bracket cover to the frame using a ratchet with a _" socket. IMPORTANT: Make sure to place bracket on frame with the two holes facing front of chair as shown below in picture A.
4. Continuing at the right side of the chair, insert the arm through left bracket as shown below in picture B.



5. Before attaching bracket and bracket cover on the right side, lift arm to the position in the below picture. Attach bracket and bracket cover to the frame of the chair using a ratchet with a $\frac{1}{2}$ " socket. **IMPORTANT:** Make sure to place bracket on frame with the two holes facing front of chair as shown below.



6. Before inserting the hex-head screw into the bracket on the right side, make sure to let down the tablet as in the below picture.



7. Insert the hex-head screw through the hole of the bracket on the right side using a $\frac{7}{16}$ " ratchet. Place lock nut on and tighten with a pair of pliers.