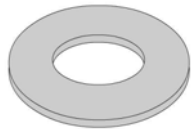




Sport Bench 6 Foot

TOOLS REQUIRED: 7/16" SOCKET



Washer - (18)



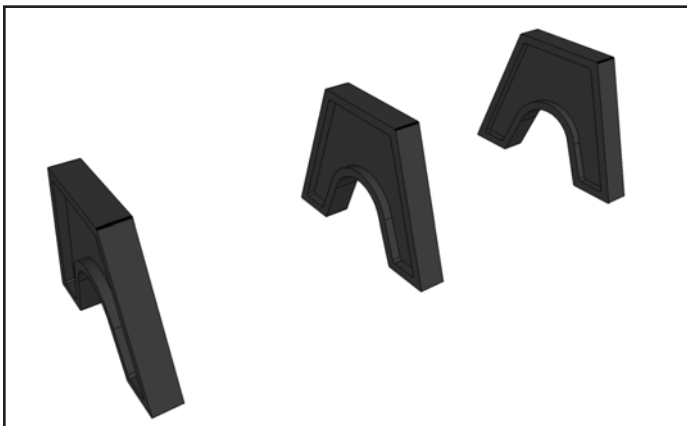
Lag Screws - (18)



Base Component - (3)



2" x 4" x 6' - Seat Board (3)



1. Verify all parts and hardware before beginning. Assemble on a flat level surface.
2. Place the Base Components equally spaced out about 2 feet apart on a flat level surface.



3. Place the Seat Board on the Base Supports and line up the screws with the pre drilled holes in the supports. Start with one of the outside boards and finish with the remaining bench supports in any order.



4. Using the 7/16" socket tighten the lag screws securing the slats and the supports.

5. **DO NOT OVERTIGHTEN THE LAG SCREWS! THIS MAY CAUSE THE PLASTIC BENCH SUPPORTS TO STRIP OUT!**