

12" Cube • PC1211 • INSTRUCTIONS

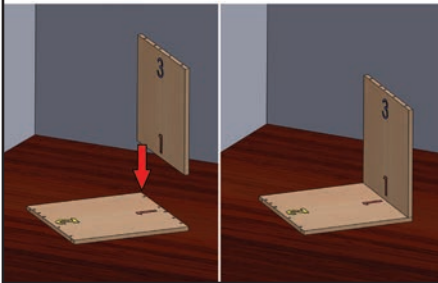
Organize your parts and hardware. You may need a rubber mallet.



**MUST FOLLOW STEPS IN ORDER
OR
FURNITURE MAY BE DAMAGED**

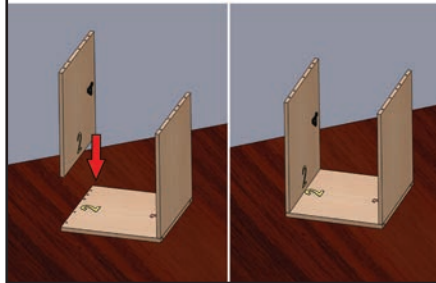
STEP 1

Push sides labeled (1) to each other



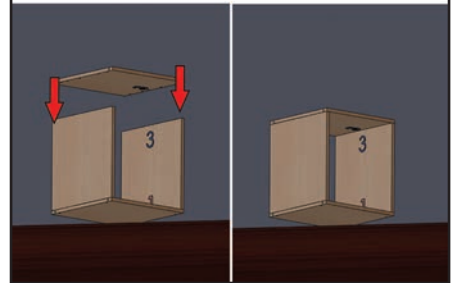
STEP 2

Push sides labeled (2) to each other



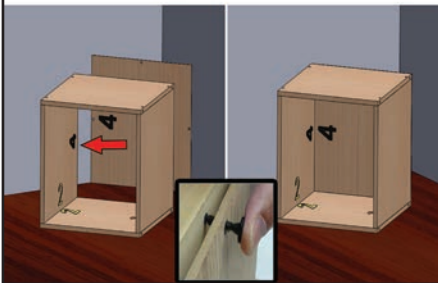
STEP 3

Push sides labeled (3) to each other



STEP 4

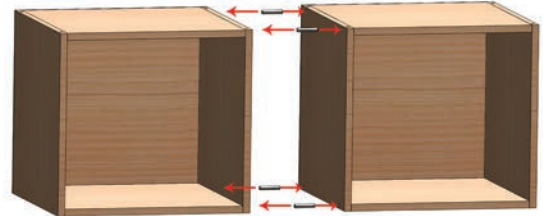
Use panel fasteners for back panel



Use spring pins to connect cubes



4 spring pins
included with each cube



Use your creativity!



IMPORTANT NOTICE:

Place all wooden parts on a clean and smooth surface such as a rug or carpet to avoid the parts from being scratched.
Check to be sure that you have all parts.
Remove all wrapping materials, including staples & packing straps before you start to assemble.
Keep all hardware parts out of reach of children.

CHECK OUT THESE OTHER GREAT ITEMS :



PBC1629
3 Shelf Deskside Bookcase



PDS3116
31" Home Office Desk

