

UNO Series Group and Reception Seating



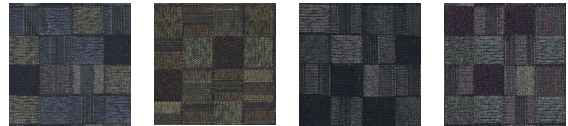
*Model 420
Lounge Chair*



- 250 lb. weight capacity
- Flexible back for added comfort
- Molded fire-retardant seat foam
- Available in fabric/pvc-free polyurethane & full pvc free polyurethane
- Anti-microbial/anti-bacterial polyurethane
- Contemporary design
- Sturdy round steel tube frame
- Ganging brackets
- Easy Assembly



Geometrix Series - Fabric Colors



Blue Jay

Copper

Nickel

Plum

PVC Free Polyurethane Colors



Blue

Brown

Black

Taupe

Model 420

Uno Lounge Chair

Shown with Profile tables 2010, 2012 & 2014

Model 420

Seat Size: 20.50" W x 20.50" D

Back Size: 20.50" W x 13.50" H

Seat Height: 17"

Overall Height: 31"

Overall Depth: 28.25"